

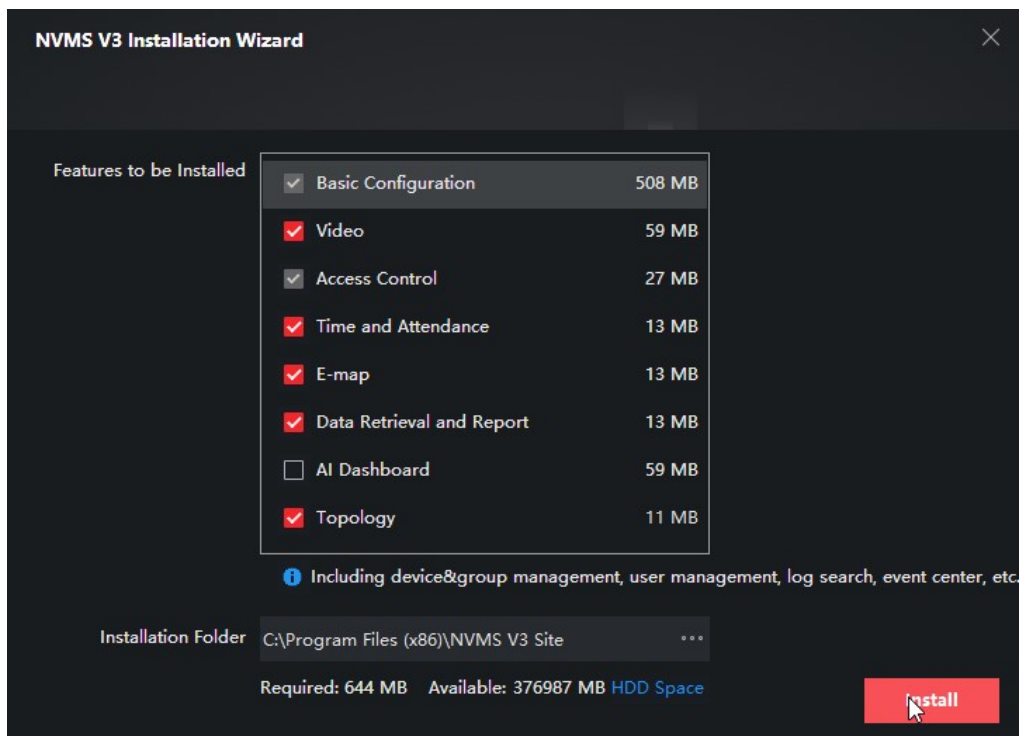
Remote Viewing Big Dog Surveillance Cameras from a PC NVMS V3 Quick Setup Guide

Click here to download the installation file → [Download NVMS V3](#)

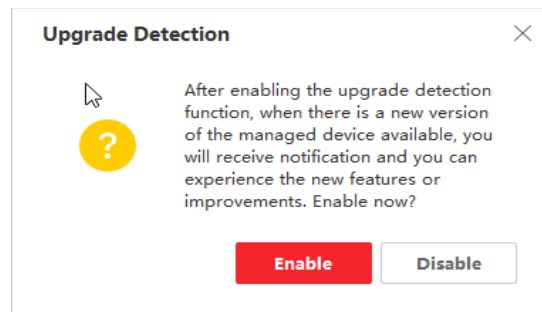
NOTE: You can also visit shopbigdog.com/support to download application files and related manuals.

Once downloaded, locate the file on your computer and run the executable to begin the installation.

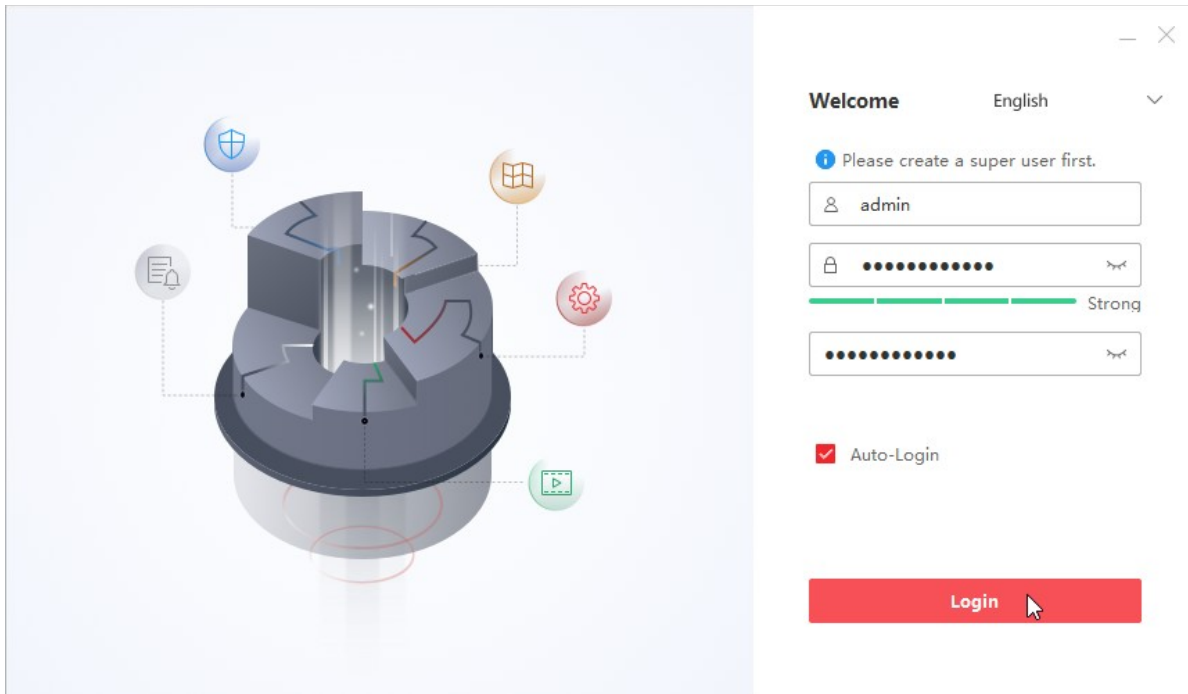
NVMS V3 Installation Wizard:



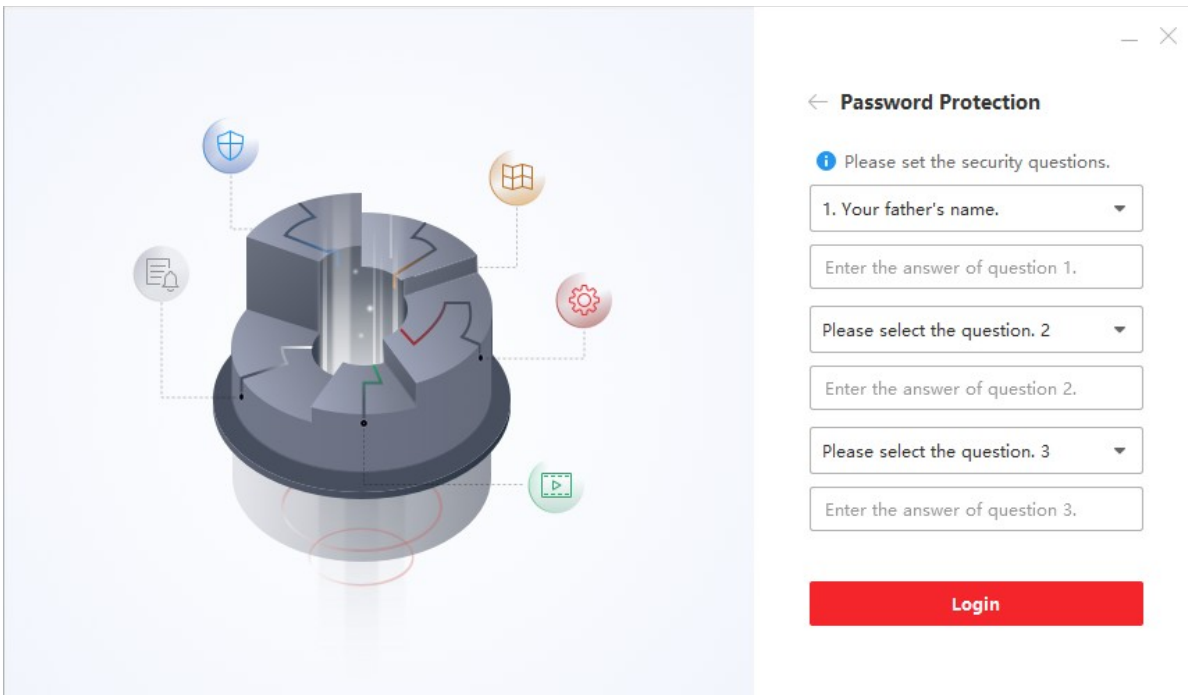
On the first screen, leave the default features checked (see above) and click install. **Note:** If you would like to install to a different directory, you can make that change at this time.



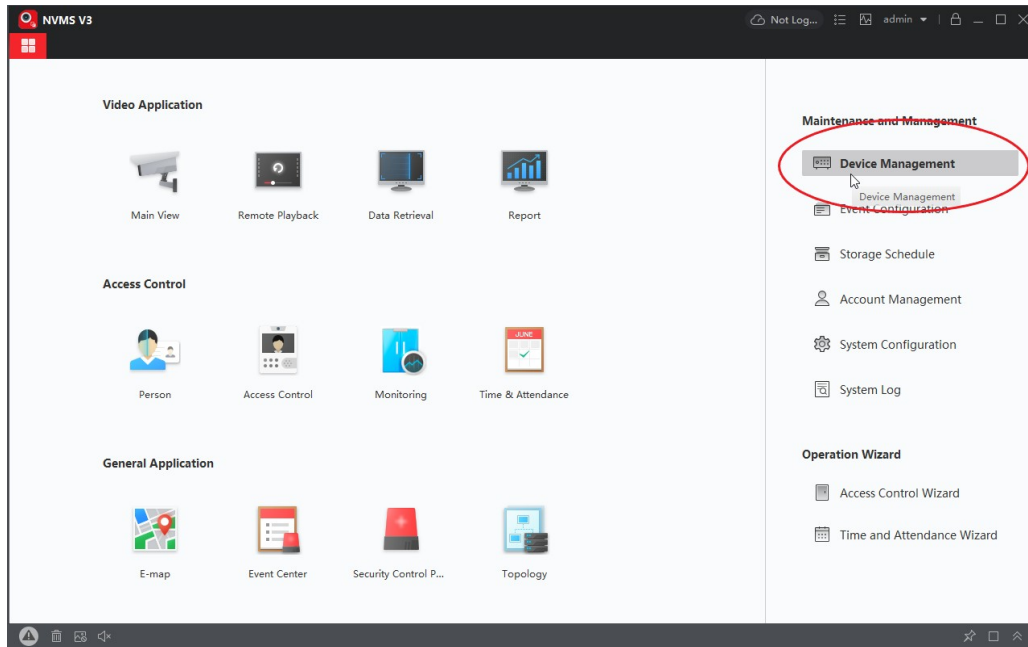
You may be asked to enable upgrade detection. Click Enable.



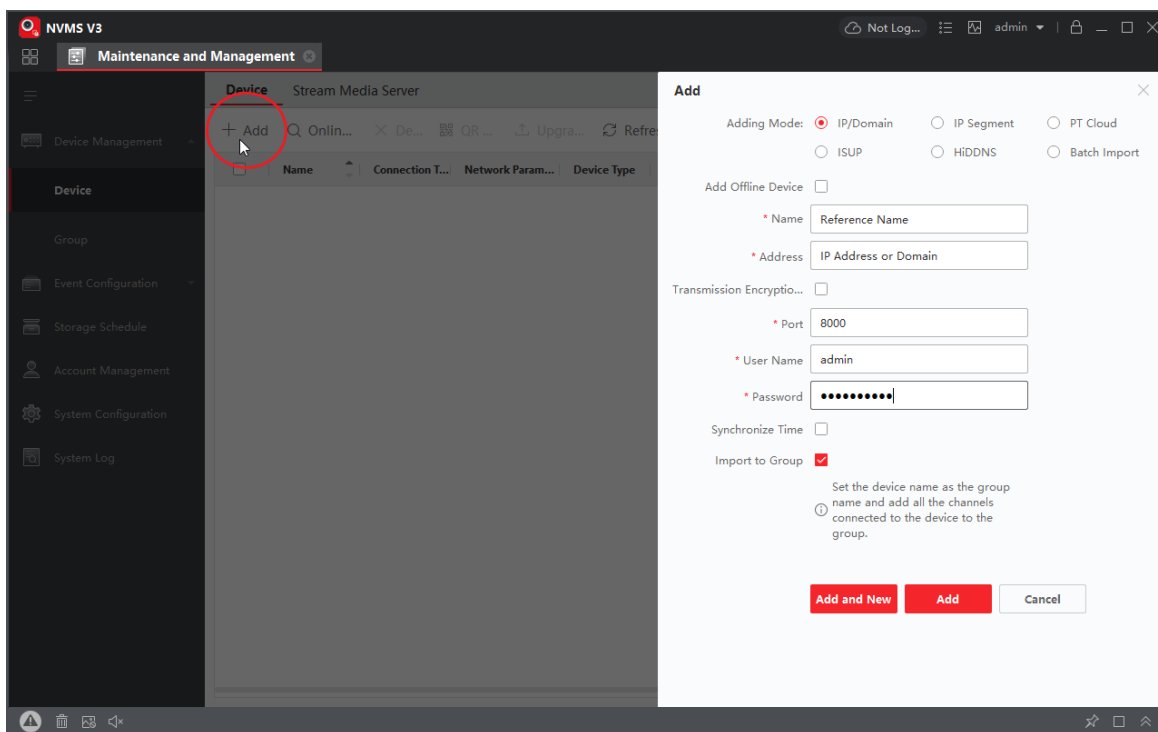
The next screen will ask you to create a “Super User”. It is very important that you remember the username and password you create. If it is lost or forgotten, you will need to uninstall and reinstall the software effectively losing all your presets and configurations. Once you have created your User Name and Password, check the box for “Auto-Login” and click “Login”.



The following screen will ask you to create security questions. These can be used to retrieve your password if it's forgotten in the future. **Note:** You will still need to remember your User Name to use this feature and if unsuccessful, your last resort will be to uninstall and reinstall.



The next screen will be the main menu page for NVMS software. On the right side under “Maintenance and Management”, click “Device Management”.

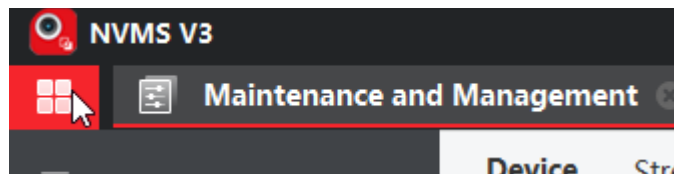
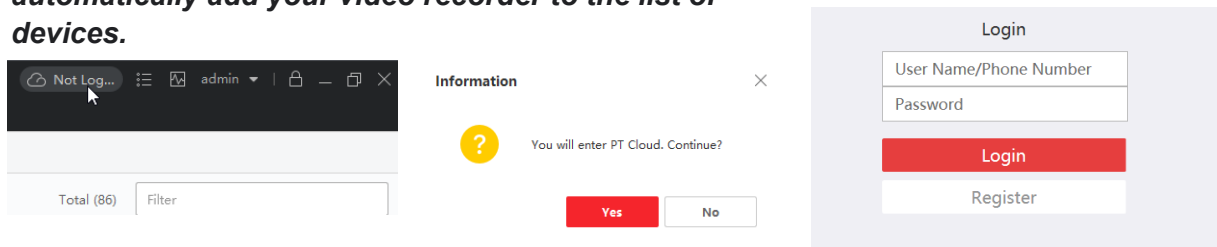


Near the top left of the new window, click the “+ Add” button to bring up the Add Device window on the right. Here is where you will enter your surveillance network specific information. “Name” is for your reference and can be whatever you like. Please work with the Big Dog Support Specialists if you do not know your IP address or Domain information. For all Big Dog Systems the default Username is **admin** and Password is **bigdog1234**. Click “Add” when done.

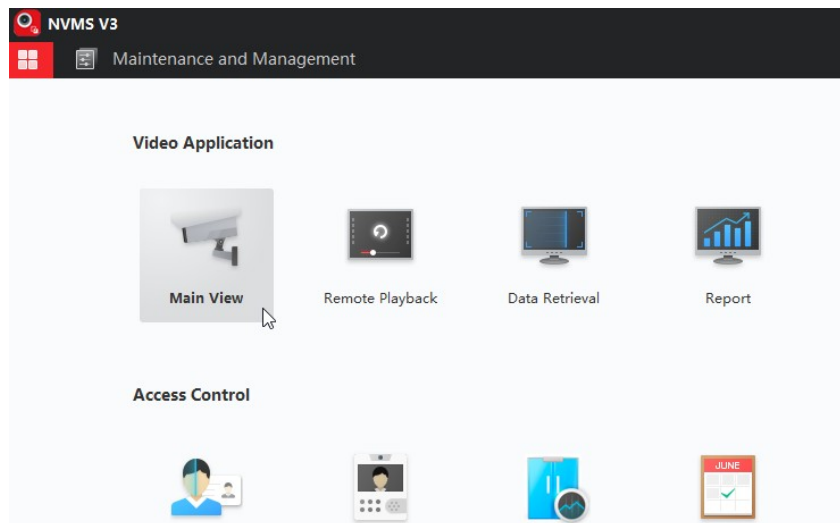
Name	Connection T...	Network Param...	Device Type	Serial No.	Security Level	Resource Us...	Firmware Upgrade
Demo	IP/Domain		Encoding D...		Weak	Online	Upgradeable

You should now see your device in the list with the information you just input reflected. If the information was entered correctly, you will see the “**✓ Online**” status.

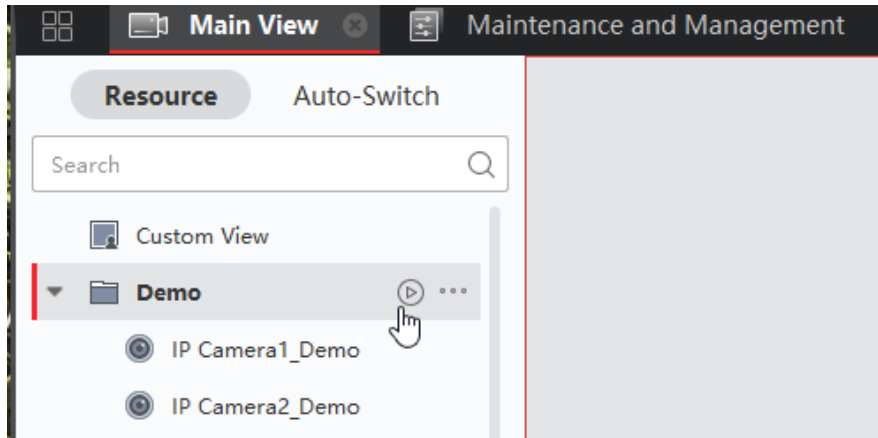
Alternatively, if you’ve connected to your DVR/NVR via PT Cloud and LTS connect, you can login to you LTS connect account to access your DVR/NVR by clicking the “Cloud” icon located in the Title bar of the NVMS V3 window. See images below, this will automatically add your video recorder to the list of devices.



In the top left corner, click the four square icon to return to the main menu.



On the main menu, select “Main View” to access the live view of the cameras.



Click the play button next to your group of cameras to play all cameras in that group. You can also go through the list to view individual cameras. If you would like to view recorded footage, return to the main menu and select "Remote Playback".